

ASAHI FUBUKI

Neurovascular Guide Catheter



ASAHI FUBUKI 043

Distal Support System



A high performance line of neurovascular

ASAHI FUBUKI

Neurovascular Guide Catheter



Stable platform for your procedure.

Features 6Fr, 7Fr, 8Fr

Flexibility

- Soft tip and flexible distal shaft minimizes vessel injury.

Pushability

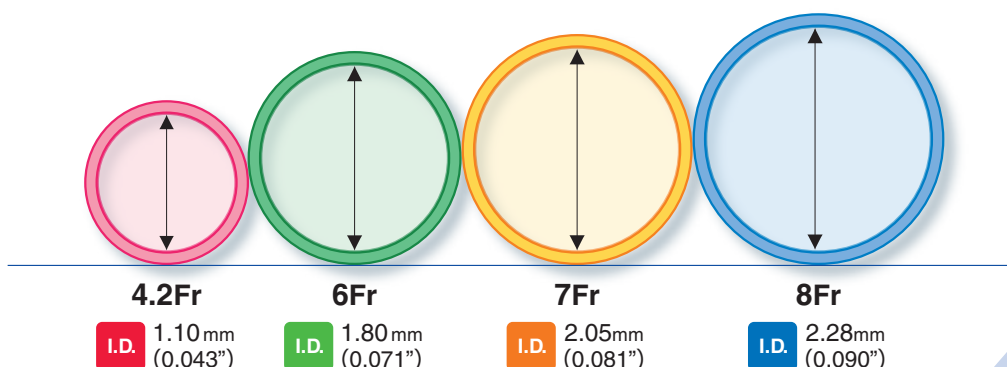
- Well-balanced shaft with increased rigidity provides stable deployment and optimal pushability.

Lubricity

- Hydrophilic coating from the tip to 15cm (8Fr=5cm) allows smooth navigation through aortic arch and vessel ostium.

Visibility

- Radiopaque marker tip & shaft enhance visibility provided by a platinum marker on the tip and radiopaque material in the shaft.



guide catheters in a wide range of sizes

ASAHI FUBUKI 043

Distal Support System



Strong support for delivering devices.

Features 4.2Fr (ID:0.043")

■ Trackability

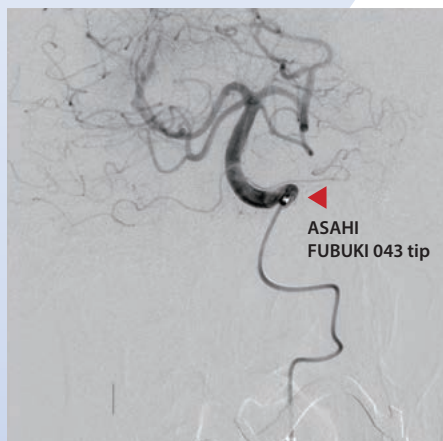
- Hydrophilic coating and flexible soft tube provides superb trackability in sharp bends or tortuous vessels.

■ Enhanced kink resistance

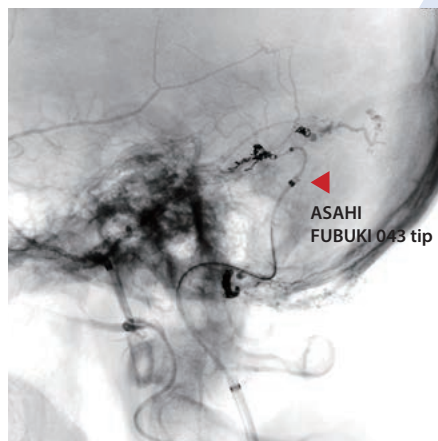
- Proprietary wire braiding technology enhances kink resistance and maintains lumen integrity.

■ Delivery Support

- Large inner lumen 1.10mm(0.043") with PTFE coating enables smooth delivery of the microcatheter.



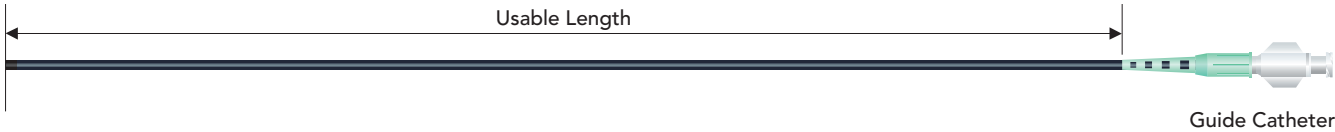
In meningeoma treatment



In AVF treatment

Ordering Information

■ Structure



ASAHI FUBUKI 6Fr

Neurovascular Guide Catheter

Catalog No.	Usable Length	Coating Length	Tip Shape
WAIN-FBK-6A	90 _{cm}	15 _{cm}	Angled
WAIN-FBK-6S	90 _{cm}	15 _{cm}	Straight
WAIN-FBK-6A80	80 _{cm}	15 _{cm}	Angled
WAIN-FBK-6S80	80 _{cm}	15 _{cm}	Straight
WAIN-FBK-6AL	100 _{cm}	15 _{cm}	Angled
WAIN-FBK-6SL	100 _{cm}	15 _{cm}	Straight
WAIN-FBK-6A110	110 _{cm}	15 _{cm}	Angled
WAIN-FBK-6S110	110 _{cm}	15 _{cm}	Straight

ASAHI FUBUKI 7Fr

Neurovascular Guide Catheter

Catalog No.	Usable Length	Coating Length	Tip Shape
WAIN-FBK-7A	90 _{cm}	15 _{cm}	Angled
WAIN-FBK-7S	90 _{cm}	15 _{cm}	Straight
WAIN-FBK-7A80	80 _{cm}	15 _{cm}	Angled
WAIN-FBK-7S80	80 _{cm}	15 _{cm}	Straight
WAIN-FBK-7AL	100 _{cm}	15 _{cm}	Angled
WAIN-FBK-7SL	100 _{cm}	15 _{cm}	Straight
WAIN-FBK-7A110	110 _{cm}	15 _{cm}	Angled
WAIN-FBK-7S110	110 _{cm}	15 _{cm}	Straight

ASAHI FUBUKI 8Fr

Neurovascular Guide Catheter

Catalog No.	Usable Length	Coating Length	Tip Shape
WAIN-FBK-8S	90 _{cm}	5 _{cm}	Straight
WAIN-FBK-8S80	80 _{cm}	5 _{cm}	Straight
WAIN-FBK-8SL	100 _{cm}	5 _{cm}	Straight
WAIN-FBK-8S110	110 _{cm}	5 _{cm}	Straight

ASAHI FUBUKI 043

Distal Support System

Catalog No.	Usable Length	Coating Length	Tip Shape
WAIN-FBK-4-120	120 _{cm}	105 _{cm}	Straight
WAIN-FBK-4-125	125 _{cm}	110 _{cm}	Straight
WAIN-FBK-4-130	130 _{cm}	115 _{cm}	Straight

Stylet and Peel-away included (FUBUKI 043 only)



© 2015 ASAHI INTECC CO., LTD.
"ASAHI" and "FUBUKI" are trademarks or registered trademarks of ASAHI INTECC CO., LTD. in Japan and other countries.

Manufactured by:



ASAHI INTECC CO.,LTD.
3-100 Akatsuki-cho, Seto, Aichi 489-0071 Japan
Contact phone number: +81-561-86-9101
<http://www.asahi-intecc.com>

Distributed by: